

## DHP 800CE Powerpack



### Diesel power pack

The DHP 800 CE is a diesel driven hydraulic power pack intended to drive an iCON zero resonance vibratory hammer.

The 800 uses a Caterpillar C-18 engine with a power rating of 597 kW ( 800 hp). The engine is fitted with Parker high pressure industrial pumps, type PV+, with a capacity of 950 L at 1800 rpm.

The enclosure is made from galvanised steel and offer optimum protection in tropical and marine environments. Several doors provide maintenance access, and for large maintenance work or replacement the complete enclosure can easily be removed. The two or four certified lifting eyes provide easy transport.

The hydraulic pumps are electronic volume controlled to be able to vary the flow from 0-100% by pushbuttons. Properly sized manifolds guarantee a low return pressure, maximizing the efficiency of the unit. Combining the hydraulic oil cooler into the engine cooler further improves the fuel efficiency of the powerpack.

The newly developed IP65 electronic control system with pendant control which completes the power pack. It provides a menu for different applications behind operator passwords. Our smart solution for engine speed control will limit noise and improve fuel efficiency even further !

The powerpack is easily adaptable to drive other functions, like winches, hydraulic hammers or pump drive.

These power packs are of course built according to the CE regulations ( including the noise requirement ), quality management standard ISO9001 and good workmanship.

## SPECIFICATIONS



### DIESEL DRIVE

Make and model	Caterpillar C18 ACERT
Emissions	Tier2 Stage IIA
Type	water cooled, direct injection
Aspiration	turbo charged and inter cooled
No. of cylinders	6
Power	597 kW, E rating (intermittent)



### ELECTRIC SYSTEM

System	24 VDC
Batteries	2 x 12 VDC, 200 Ah
Alternator	70 A
PLC	IFM
Protection Rating	IP65



### HYDRAULIC SYSTEM

Open circuit system for maximum cooling and filtering efficiency. Variable displacement pump for optimum power consumption and smooth operation.

Make and model	Parker PV+, 2 x 270 cc tandem
Regulator	Electronic displacement control
Maximum flow	950 l/min
Auxiliary flow	25 l/min
Pressure	380 bar
Full flow return filter	10 microns



### COOLING SYSTEM

The hydraulic oil cooler is combined with the engine cooler and provides ample capacity without using auxiliary power to drive extra cooler fans.



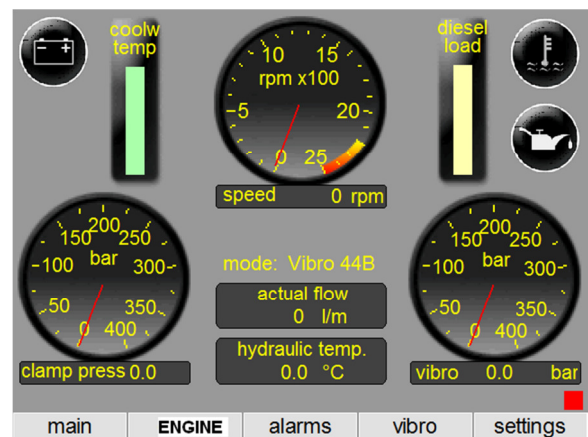
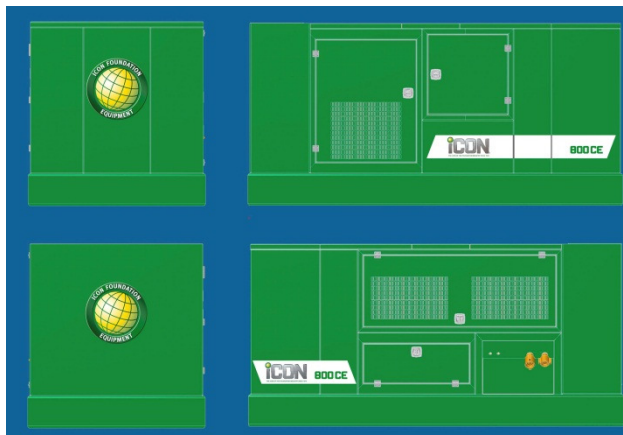
## SERVICE CAPACITY

Fuel tank	700 l
Hydraulic oil tank	1500 l
Engine oil	20 l
Engine coolant	35 l

## DIMENSIONS

Weight	9000 kg empty
Length	4500 mm
Width	2200 mm
Height	2300 mm

Materials and specifications are subject to change without notice.



## Global Sales and Service locations

### EUROPE

Coverage Area: Europe  
Company: iCON® Foundation Equipment  
Telephone: +31 162 58 23 24  
Contact: Hendrik de Vink  
Website: [www.iconfe.eu](http://www.iconfe.eu)

Coverage: Germany  
Company: Hamburger Baumaschinen GmbH  
Telephone: +49 4327 9992220  
Contact: Frank Buss  
Website: [www.hamburger-baumaschinen.de](http://www.hamburger-baumaschinen.de)

Coverage Area: Italy  
Company: TIMECO, Srl  
Telephone: +39 02 9538 4064  
Contact: Silvio Schmalzbauer  
Website: [www.timecosrl.it](http://www.timecosrl.it)

Coverage: Poland  
Company: Archon  
Telephone: +48 (0)32 7199134  
Contact: Wieslaw Lizoczyk  
Website: [www.archonspzoo.pl](http://www.archonspzoo.pl)

Coverage: Turkey  
Company: Gruptekno  
Telephone: +90 216 3403400  
Contact: Sait Gönen  
Website: [www.gruptekno.com](http://www.gruptekno.com)

Coverage Area: United Kingdom & Ireland  
Company: Dawson Construction Plant LTD  
Telephone: +44 (0) 1908 240300  
Contact: Tim Moore  
Website: [www.dcpuk.com](http://www.dcpuk.com)

Coverage Area: Ukraine & Russian Fed.  
Company: iCON® Foundation Equip, BV  
Telephone: +31 (0) 162 582324  
Contact: Saltanat Omarova  
Website: [www.iconfe.eu](http://www.iconfe.eu)

Coverage Area: Netherlands  
Company: iCON® Foundation Equipment  
Telephone: +31 162 58 23 24  
Contact: Hendrik de Vink  
Website: [www.iconfe.eu](http://www.iconfe.eu)

### SOUTHEAST & ASIA

Coverage Area: Singapore, Thailand, Indonesia  
Company: ICE FE PTE LTD  
Telephone: 65 6861-3733  
Contact: Lim Thian Fatt & Hah Hen Khean  
Website: [www.icefe.com](http://www.icefe.com)

Coverage Area: Malaysia, Brunei  
Company: ICE FE Sdn Bhd  
Telephone: 603-9133 2618  
Contact: Mr. Johnny Choy Shun Yeong  
Website: [www.icefe.com](http://www.icefe.com)

Coverage Area: India  
Company: Suretech Global  
Telephone: +91 22 27420045  
Contact: Sunil Newatia & Surajit Mukherjee  
Website: [www.suretech.co.in](http://www.suretech.co.in)

Coverage Area: Philippines, Vietnam, Laos, Pakistan  
Company: ICE FE PTE LTD  
Telephone: 65 6861-3733  
Contact: Lim Thian Fatt & Hah Hen Khean  
Website: [www.icefe.com](http://www.icefe.com)

Coverage Area: China, Hong Kong, Taiwan,  
Company: ICE FE PTE LTD  
Telephone: 65 6861-3733  
Contact: Lim Thian Fatt & Hah Hen Khean  
Website: [www.icefe.com](http://www.icefe.com)

Coverage Area: Japan  
Company: ICE, Inc.  
Telephone: 1-704-821-8200  
Contact: Jim Ziemer  
Website: [www.iceusa.com](http://www.iceusa.com)

### AUSTRALIA

Coverage Area: Australia & New Zealand  
Company: PILEQUIP Australia Pty Ltd.  
Telephone: +61 (0) 2 9838 3144  
Contact: Brett Camm  
Website: [www.pilequip.com.au](http://www.pilequip.com.au)

### AFRICA

Coverage Area: Egypt, South Africa & Nigeria  
Company: ICE, Inc.  
Telephone: 1-704-821-8200  
Contact: Jim Ziemer  
Website: [www.iceusa.com](http://www.iceusa.com)

### SOUTH & CENTRAL AMERICA

Coverage Area: Brazil, Colombia  
Company: ICE, Inc.  
Telephone: 1-704-821-8200  
Contact Name: Jim Ziemer  
Website: [www.iceusa.com](http://www.iceusa.com)

Coverage Area: Chile, Ecuador, Venezuela, Panama  
Company: ICE, Inc.  
Telephone: 1-713-828-4164  
Contact Name: Rick Garcia  
Website: [www.iceusa.com](http://www.iceusa.com)

### MIDDLE EAST

Coverage Area: Middle East  
Company: iCON® Foundation Equipment  
Telephone: +31 162 58 23 24

Contact: Hendrik de Vink  
Website: [www.iconfe.eu](http://www.iconfe.eu)

**ICON Foundation Equipment B.V.**

Lissenveld 69

4941 VL Raamsdonksveer  
the Netherlands

Phone: +31(0)162 - 582 324

[www.iconfe.eu](http://www.iconfe.eu)



**ICON Foundation Equipment B.V.**  
Lissenveld 69  
4941 VL Raamsdonksveer  
the Netherlands  
Phone: +31(0)162 - 582 324  
[www.iconfe.eu](http://www.iconfe.eu)